



RELATED POLICY

Facility Intern Allocation Status Policy 1.3

PURPOSE

The following documentation outlines the process for a NT health regional health service to request Accreditation as a new prevocational doctor (PGY1 + 2) Education and Training NT health regional health service.

SCOPE

Full Accreditation status (4yrs) as a training NT health regional health service for Prevocational (PGY1 + 2) Education and Training is possible only when the training NT health regional health service can demonstrate their capacity to meet all NT Accreditation requirements as outlined in the Prevocational Accreditation Standards and Guidelines. A NT health regional health service can apply for initial Accreditation with either Primary Allocation Status or Secondment Allocation Status; however the NT health regional health service must fulfil the requirements for status as outlined in NT health regional health service Allocation Status Policy.

DEFINITIONS

NT health regional health service - The NT health regional health service is the institution or clinical setting within which prevocational doctor's work and train. These organisations will usually be hospitals but may be health care centres or supervised practice locations in community settings that have met Accreditation requirements for prevocational doctor training.

Prevocational Doctors – Include

- doctors in their Postgraduate Year 1 (PGY1/Internship);
- Postgraduate Year 2 (PGY2/RMO), and above who have obtained full registration and where the prevocational doctor is not studying through a vocational college program; and
- includes Australian resident overseas-trained doctors on probationary registration.

Primary Allocation Status – is the Accreditation Status awarded to a NT health regional health service capable of providing all the compulsory terms required for Intern registration.



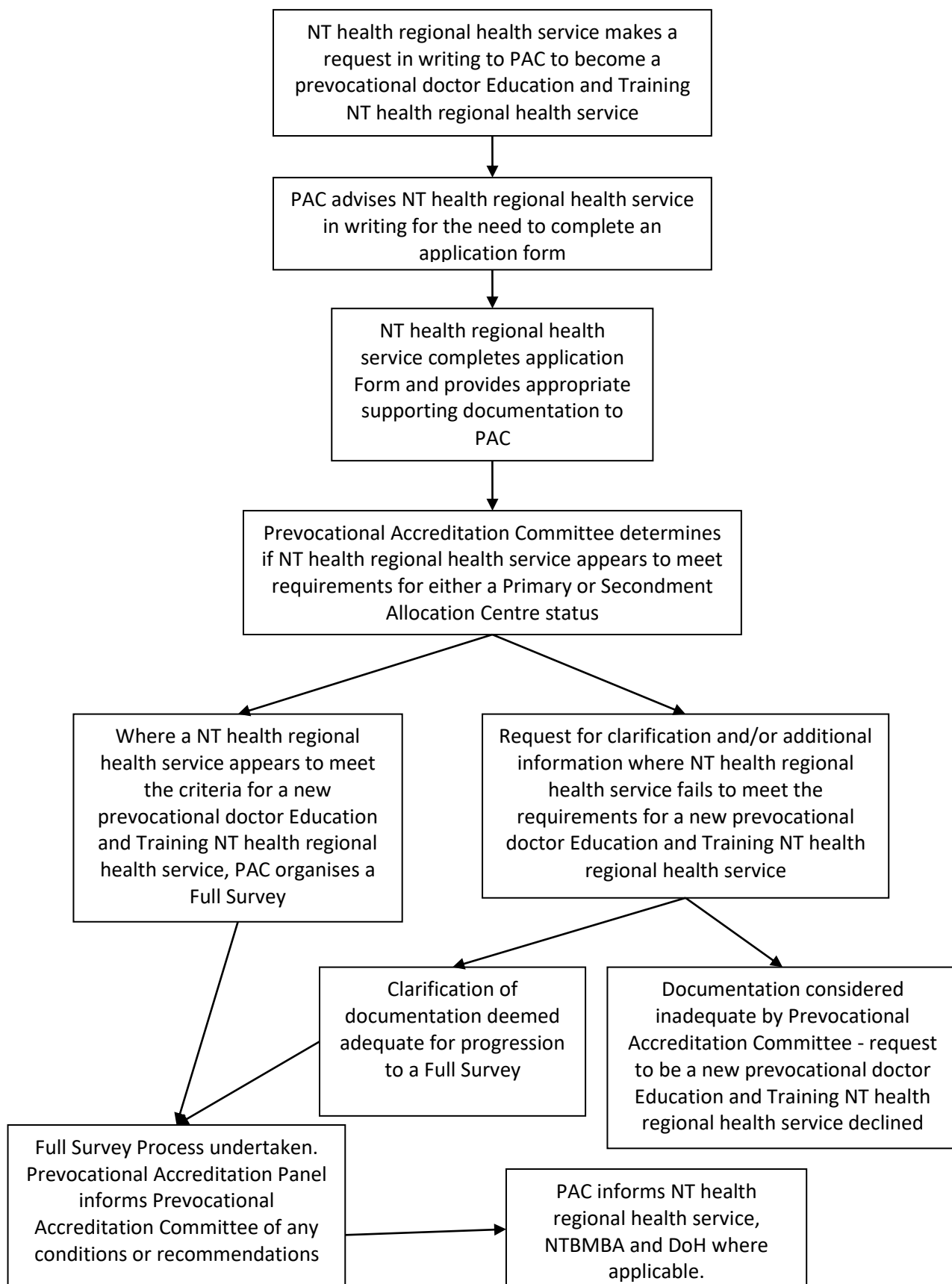
INITIAL APPLICATION FOR ACCREDITATION

Secondment Allocation Status – is the Accreditation Status awarded to a NT health regional health service with accredited terms, but which is unable to provide one or more of the compulsory terms required for Internship.



INITIAL APPLICATION FOR ACCREDITATION

PROCESS FLOWCHART





INITIAL APPLICATION FOR ACCREDITATION

PROCESS DESCRIPTION

The timeframe for this process is in accordance with that outlined within the Full Survey Process:

1. A NT health regional health service makes a written request to Prevocational Accreditation Committee (PAC) asking for consideration to have prevocational doctors for the first time and as such to become a new prevocational doctor Education and Training NT health regional health service.
2. PAC advises the NT health regional health service in writing of the need to complete a Prevocational Accreditation Application Form.
3. NT health regional health service completes the Application Form and submits to PAC.
4. Prevocational Accreditation Committee reviews the NT health regional health service's response and either:
 - a. Supports the application and advises the NT health regional health service of the need for a Full Survey (at which time the Full Survey Process is implemented), or
 - b. Advises the NT health regional health service of the areas that require modification prior to their application being considered further

SUPPORTING DOCUMENTATION

1. *Facility Intern Allocation Status Policy 1.3*
2. *Accreditation Policy 1.1*

PERFORMANCE MEASURES/KPI

1. 100% of requests for Initial Accreditation status are managed according to this Process

Process Contact Officer: Quality Assurance Officer